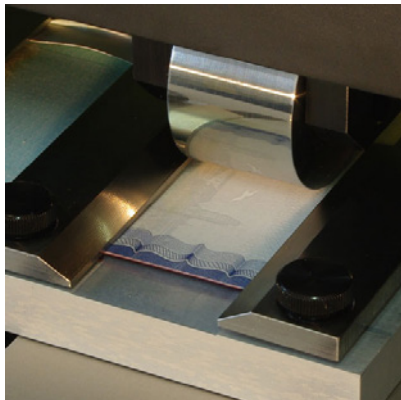


OPTION: - Connectivity features



Features & description

The BGi108 testing equipment is not part of ISO or ICAO paper norm but was developed by BG INGENIERIE following demands of passport manufacturers. A wheel comes over the all passport surface, on «x» and «y» axes, applying a strength up to 70Kg.

- Stand-alone equipment with screen touch interface (30 programs memorized)

Advantages

- For e-passport, cards, inlays, ...
- All parameters adjustable by embedded software (force, speed, number of cycles)

Description

- Width: 440mm
- Depth: 560mm
- Height: 530mm
- Weight: 42kg

Facilities / Environmental conditions

- Power: 100-240V AC
- Frequency: 50-60Hz single phase
- Power consumption: 200W maximum
- Operating temperature: +10°C to +40°C
- Pneumatic characteristics: 6 bars

Test characteristics

- Configurable test by menu
- Force applied: from 5 to 70 kg
- Speed adjustable from 10 to 200 mm/s
- Insertion and length of run adjustable
- Strength electronically adjustable from 5 to 70kg
- Number of cycles: from 1 to 999 999

Norms references:

- Not part of ISO nor ICAO norms