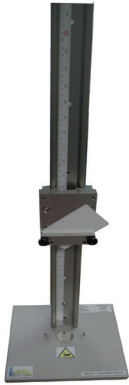


BGI055V2-A: Corner impact



Description:

It tests the resistance to impact corner for the different layers of ID1 card bodies. It has a dropping height of up to 700mm and an impact weight of 13,3N (others parameters possible).

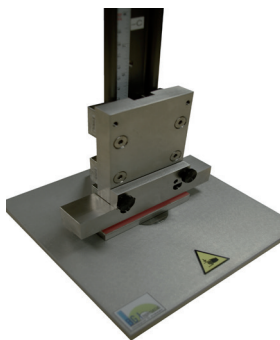
Norms:

- CQM 2016: TM-417
- ANSI 322 2015: 5.19, 6.1, 6.6

Characteristics:

- 200x200x950mm (WxDxH)
- Weight: 2.70kg

BGI055V2-B: Card impact fixture



Description:

It tests the resistance of a card that is under stress, and then receives an impact. It has a dropping height of up to 550mm and an impact force of 13.3N (others parameters possible).

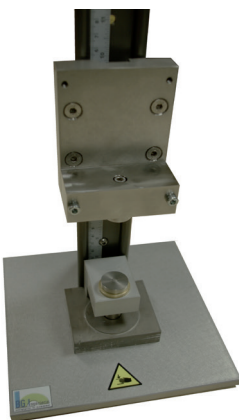
Norms:

- ANSI 322 2015: 5.4

Characteristics:

- 200x200x950mm (WxDxH)
- Weight: 4.00kg

BGI055V2-C: Resistance to impact (ball impact)



Description:

It tests the resistance to ball impact on ID1 card bodies. It has a dropping height of up to 600mm, an impact weight of 18N and a ball radius of 7.93mm (others parameters possible).

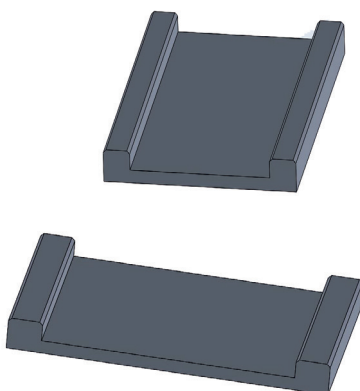
Norms:

- CQM 2016: TM-416
- ANSI 322 2015 5.6, 6.1
- ISO7811-1

Characteristics:

- 200x200x950mm (WxDxH)
- Weight: 3.60kg

BGI055V2-D: ID-1 Card Static Stress



Description:

The BGI055V2-D tool is used to prepare the card before card impact fixture test BGI055V2-B. The card must be inserted for 24 hours in the tool BGI055V2-D to performed the test: ANSI 322 2015 5.4.

The BGI055V2-D determines the resistance of the card to cracking while under a combination of mechanical stress and plasticizer exposure. This test follow the norm ANSI 322 2015 5.5

Characteristics:

- 70x100x10mm (WxDxH)
- Weight: 0.106kg
- 100x60x10mm (WxDxH)
- Weight: 0.085kg